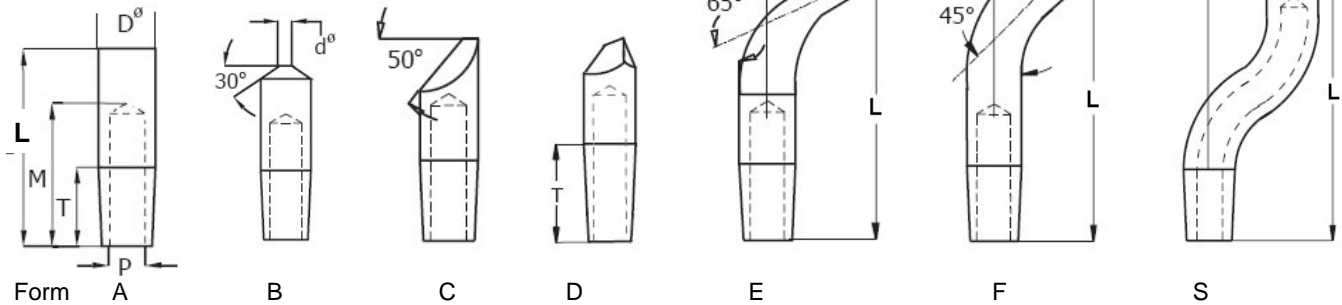


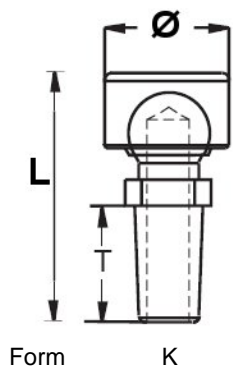
TECNA punktsvejseelektroder KONUS BS11 - BS13 - BS15 - BS19

Elektrodekobber M-328 til jern og galv. plade
 Elektrodekobber M-100 til rustfri stål og tråd
 Andre faconer fremstilles efter opgave

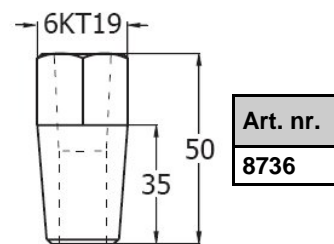
E og F bukket kun i BS13 - BS15



| Form | Konus | Art. nr. | L | M | P | D | T |
|------|-------|----------|-----|----|----|----|----|
| A | BS11 | 5214 | 30 | 17 | 7 | 12 | 12 |
| A | BS13 | 3724 | 39 | 23 | 8 | 16 | 18 |
| A | BS15 | 3624 | 43 | 25 | 9 | 18 | 18 |
| A | BS19 | 8702 | 62 | 40 | 11 | 22 | 26 |
| B | BS11 | 5211 | 30 | 17 | 7 | 12 | 12 |
| B | BS13 | 3720 | 39 | 23 | 8 | 16 | 18 |
| B | BS15 | 3620 | 43 | 25 | 9 | 18 | 18 |
| B | BS19 | 8701 | 62 | 40 | 11 | 22 | 26 |
| C | BS11 | 5212 | 30 | 17 | 7 | 12 | 12 |
| C | BS13 | 3721 | 39 | 23 | 8 | 16 | 18 |
| C | BS15 | 3621 | 43 | 25 | 9 | 18 | 18 |
| C | BS19 | 8703 | 62 | 40 | 11 | 22 | 26 |
| D | BS11 | 5213 | 30 | 17 | 7 | 12 | 12 |
| D | BS13 | 3722 | 39 | 23 | 8 | 16 | 18 |
| D | BS15 | 3622 | 43 | 25 | 9 | 18 | 18 |
| D | BS19 | 8705 | 62 | 40 | 11 | 22 | 26 |
| E | BS13 | 3723G | 74 | 34 | 8 | 16 | 18 |
| E | BS15 | 3623G | 74 | 34 | 9 | 16 | 20 |
| F | BS13 | 3723H | 81 | 40 | 8 | 16 | 18 |
| F | BS15 | 3623H | 81 | 40 | 9 | 16 | 20 |
| S | BS11 | 3833 | 52 | 19 | 7 | 14 | 12 |
| S | BS13 | 3723 | 73 | 28 | 7 | 16 | 18 |
| S | BS15 | 3623 | 74 | 25 | 8 | 16 | 20 |
| S | BS19 | 8706 | 110 | 40 | 10 | 20 | 26 |



| Form | Art. nr. | L | Ø | P |
|------|----------|----|----|----|
| K | 3835 | 44 | 22 | 12 |
| K | 3725 | 50 | 30 | 18 |
| K | 3625 | 52 | 30 | 20 |



**Mellembøsning
BS15 - BS19**